

STRATEGIC HEALTHCARE CONSTRUCTION REPORT

Volume 2 Issue 1

January 8, 2021



QUALITY. INTEGRITY. INNOVATION.

Our goal is to facilitate a streamlined process in the healthcare construction & inspection industry. We pursue and align these goals with our Clients, Designers, OSHPD and Contractors through experience, expertise and innovation.

[Visit our website](#)

FOLLOW US



Highlights



Providence Holy Cross Medical Center

The Emergency Operations for the US Army Corps of Engineers visited Holy Cross in Mission Hills, CA this past week. They are working through OSHPD's Facility Development Division for Hospital site assessments to provide and recommend best practices which can be very beneficial to the facility, as well as, provide the opportunity to receive FEMA reimbursements. As we learn about CV19, the need and demand for medical oxygen systems has increased for specific patient treatment.

Providence Holy Cross has implemented best practices with adding fans to

reduce build up of ice on vaporizers and pipes. Please see our SBS LABS section below for additional information and best practices from OSHPD.

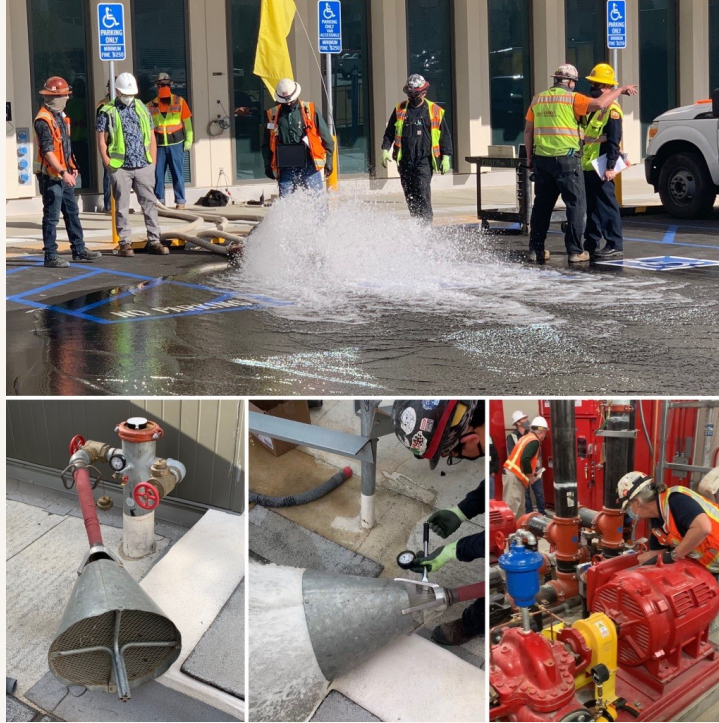


Photo: Ryan Berry, Director of Healthcare, HB&A, providing details of current Oxygen demand to USACE



Loma Linda University Medical Center

The New Campus Transformation Project is equipped with two redundant 250 HP motor driven fire pumps that provide 1000 gpm @ 265 psi. This project is under 2013 California Building Code and field acceptance testing procedures are outlined in 2013 NFPA 20 Section 14.2.6. We had a successful test with our OSHPD fire marshals, Compliance Officer and local fire authority this past week bringing us closer to Occupancy of the 1 million square foot Replacement Hospital.



Seismic Upgrade Project

The Seismic Upgrade is set to begin at Antelope Valley Hospital. SBS has been awarded Inspector of Record for this project and will be working along with RBB Architects for this SPC 2 reclassification. This CBC Section 3404A.5 "Voluntary Seismic Improvement" project includes all of the seismic upgrades needed to reclassify Existing 1054 Building 1 Canopy & Bld.-00739 East Wing Addition (Building 3) from its current structural performance category of SPC-1 to SPC-2.





The healthcare construction industry can be very technical and it takes years of experience to accurately navigate through the process. We wanted to use this newsletter as not only reading about what SBS is up to, but also as a tool that can provide helpful information for you on your next OSHPD project. Here is this week's topic that we've experienced in the past and hopefully is beneficial to you:

OSHPD has issued an update to the [Buildup of Frost or Ice on Vaporizer and pipes due to High Flow Medical Oxygen](#).

Due to COVID-19, many hospitals are seeing increased numbers of patients requiring oxygen or have switched from ventilators to high flow oxygen treatments. However, many hospitals are experiencing a drop in oxygen line pressure, a buildup of frost/ice, etc. The California Society of Healthcare Engineering (CSHE) has issued an advisory to address possible issues with high flow of oxygen and buildup of frost/ice.

[This document](#) provides guidance to Matheson's medical bulk oxygen customers to assist in mitigating the risk associated with their vaporizers being overdrawn due to this increased demand. You can access the subject document through the OSHPD web site under the following link:

<https://oshpd.ca.gov/construction-finance/oshpd-covid-19-resources/>

As SBS LABS continues the journey of formalizing material to share with you, please take a moment to subscribe to our Youtube Channel to stay on top of all of the latest with [SBS LABS](#).

Contact SBS

Newsworthy



Construction sector adds 51,000 jobs in December

(January 8, 2021)

BD+C Article

Abbott Construction Merges with STO Building Group

(December 23, 2020)

HC+O News Article



OSHPD

Keep up to date with OSHPD's Tip of the Day

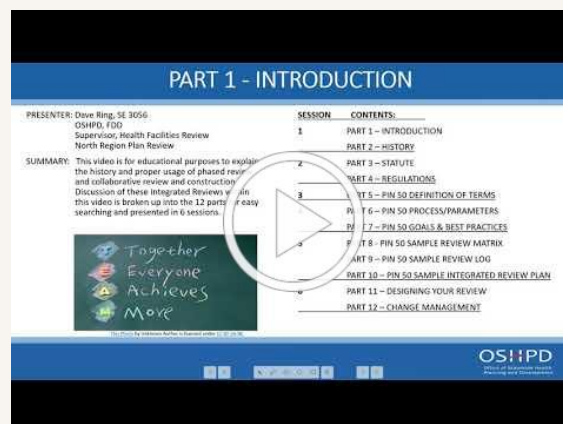
To sign up, visit [OSHPD's Subscription page](#) and select "Tip of the Day."



OSHPD

Collaborative Review and Construction (CRC) and Phased Plan Review (PPR) per PIN 50

This video is for educational purposes to explain the history and proper usage of [PIN 50](#) – Collaborative Review and Construction process (CRC) & Phased Plan Review (PPR). The PPR has been successfully used to reduce approval time and minimize the number of post approval documents. This video is presented in six sessions. See link below for Session 1 (a session will be presented weekly in chronological order).



2019 CBSC Intervening Code Cycle Updates

Changes Impacting Hospital Design and Construction and What to Expect

Over two sessions, the Office of Statewide Health Planning and Development (OSHDP) Technical Lead Disciplines will outline important changes in the intervening CBSC and explain what healthcare facilities, design professionals, and their construction teams should consider to achieve compliance.

See [flyer](#) for more information.

To register, click on the session date.

[Session 1: January 12, 2021](#) (AIA 1.5 LU | HSW)

- Introduction
- California Administrative Code
- California Building Code

[Session 2: February 9, 2021](#) (AIA 1.5 LU | HSW)

- California Electrical Code
- California Mechanical Code
- California Plumbing Code
- California Existing Building Code

Each Session is 10:00 – 11:30 a.m., Pacific Time

It is free to participate and registration is limited to **500** participants. Multiple staff members from one office should register **INDIVIDUALLY** to receive separate log-ins.

Please register early.



SAVE THE DATE!
February 24-26, 2021

Through 3 days of panel discussions and networking opportunities, the [2021 Healthcare Project Delivery Conference](#) will set out to answer complex issues surrounding the development and delivery of essential healthcare infrastructure in today's unprecedented economy.

Discover new project and partners. Connect with healthcare facility and system leaders, and learn how others are planning new developments and upgrades in the post-COVID era.

If you're preparing your next procurement and want to hear how other healthcare facilities are moving projects forward during COVID, responding to current budget and planning challenges, and planning for 2021 you'll want to join.

Register now to secure the early registration price of \$299!

Over 100 leading practitioners will present their firsthand observations of a variety of projects of all sizes from around the country.

[Click to Register and Learn More](#)



Hospital Inspector Certification Examination Preparation

Join OSHPD's Inspection Services Unit (ISU) in a series of webinars that will provide guidance on how to read drawings for the plan reading portion of the Hospital Inspector Certification Exam.

OSHPD SPEAKERS

*Joseph LaBrie, S.E.
Regional Compliance Officer
Cesar Ponce
Compliance Officer
James Pan, S.E.
District Structural Engineer
Monica Colosi
Compliance Officer*

Fee: Complimentary

TIME

1:00 - 2:00 p.m., Pacific Time

Click on dates to register for each session

REGISTRATION

[February 23, 2021: Structural Plans - INSTRUCTION](#)

[February 25, 2021: Structural Plans - PRACTICE](#)

[March 9, 2021: Mech/Plumbing Plans - INSTRUCTION](#)

[March 11, 2021: Mech/Plumbing Plans - PRACTICE](#)

[March 16, 2021: Electrical Plans - INSTRUCTION](#)

[March 18, 2021: Electrical Plans - PRACTICE](#)

[March 23, 2021: Fire Life Safety Plans - INSTRUCTION](#)

[March 25, 2021: Fire Life Safety Plans - PRACTICE](#)

HOSPITAL INSPECTOR CERTIFICATION EXAMINATION NOTICE

Effective January 1, 2020, the new Hospital Inspector Certification Examinations are based on the 2019 California Building Standards Code and referenced standards.

Please refer to the [OSHDPD website](#) for the overview of the Hospital Inspector Certification Program, minimum qualifications and the exam application form. New examinations for Hospital Inspector Class A, B and C are scheduled at a minimum of every six months.

Applications are now being accepted for the Spring 2021 (April/May) exams.

LOS ANGELES AREA

Exams for A, B and C Hospital Inspector Classifications

Dates: April 19-23, 2021 and May 17-21, 2021

Location: Office of Statewide Health Planning and Development

Wells Fargo South Tower

355 South Grand Avenue, 20th Floor

Los Angeles, CA 90071

FINAL FILING DATE – February 1, 2021

See [flyer](#) for more information.

Due to COVID-19, exams are being conducted electronically. All necessary reference code books, standards, plans, and test questions will be provided on a computer and two monitors for each examinee.

2019 CALIFORNIA BUILDING CODE**Part 2, Title 24, California Code of Regulations**

[CAN 2-102.6](#) – Remodel – 11/08/2019

Action/Comment: N/A

[CAN 2-407.4.1](#) – Direct Corridor Access from Habitable Rooms – 11/12/2015

Action/Comment: 04/23/2020

[CAN 2-407.2.2](#) – Nurses' Stations – 04/21/09

Action/Comment: 07/08/2020

[CAN 2-703.3](#) – Engineering Judgments – 05/20/09

Action/Comment: 07/09/2020

[CAN 2-2508.2.1](#) – Weather Protection for Gypsum Wallboard – 08/19/2009

Action/Comment: 04/16/2020

**“You can’t fail if you don’t quit.
You can’t succeed if you don’t
start.”**

- Michael Hyatt



Strategic Building Services
18345 Sierra Highway, Unit 6
Santa Clarita, CA 91351