

STRATEGIC HEALTHCARE CONSTRUCTION REPORT

Volume 2 Issue 2

January 15, 2021



QUALITY. INTEGRITY. INNOVATION.

Our goal is to facilitate a streamlined process in the healthcare construction & inspection industry. We pursue and align these goals with our Clients, Designers, OSHPD and Contractors through experience, expertise and innovation.

[Visit our website](#)

FOLLOW US



Highlights



Loma Linda University Medical Center

Completing general conformance review floor by floor with OSHPD. This is part of the many steps taken to achieve approval by the Office of Statewide Health Planning and Development for the New Campus Transformation Project. With over 1 Million square feet of floor space, finalizing this with completion of construction, Architectural/Engineering punchlists, and SBS IOR final inspections all need to be completed prior to review with OSHPD. Finite planning of this process and all of the building system testing provides a clear path to completion.



Construction Final was granted for CHLA's Anderson Pavilion First Floor Automatic Sliding Doors. The construction for this project included alterations to replace existing manually operated dual glass entry doors with electrically operated glass entry sliding doors into the Family Resource Center from the Anderson Pavilion first floor lobby/corridor.



SBS LABS



The healthcare construction industry can be very technical and it takes years of

experience to accurately navigate through the process. We wanted to use this newsletter as not only reading about what SBS is up to, but also as a tool that can provide helpful information for you on your next OSHPD project. Here is this week's topic that we've experienced in the past and hopefully is beneficial to you:



Commercial Cooking Hoods and Ventilation Systems

OSHPD Fire Life Safety Officer, Sander Moss, has provided a very detailed presentation (click link below to view per section) for all aspects of Commercial Cooking Hoods and Ventilation System including:

- [Facts & Stats & Required Clearances](#)
- [Grease Removal Devices](#)
- [Exhaust Duct Systems](#)
- [Airflow](#)
- [Fire Extinguishing Equipment & Installation Requirements](#)
- [Testing](#)
- [Plan Review](#)
- [System Maintenance](#)

This is great information for Designers, Contractors, Inspectors, Facility Engineers & Construction Managers. Please see the link *here* to access 180 pages of educational information that will help you in your next design, installation, testing and maintenance guide.

Thank you Sander for your time in creating and sharing this very helpful information.



As SBS LABS continues the journey of formalizing material to share with you, please take a moment to subscribe to our Youtube Channel to stay on top of all of the latest with [SBS LABS](#).

[Contact SBS](#)

Newsworthy

LOS ANGELES BUSINESS JOURNAL
Thursday, January 14, 2021 THE COMMUNITY OF BUSINESS™

Women of Influence, Construction & Design: Julie Davis
(January 11, 2021)



LA Business Journal Article

Los Angeles Times

**L.A. to turn Dodger Stadium into a
COVID-19 vaccine site this week**

(January 9, 2021)

LA Times Article

 **HPAC Engineering**

New HVACR Products: January 2021

(January 9, 2021)

HPAC Engineering Article

**BUILDING DESIGN
+ CONSTRUCTION**

Optimizing construction projects with value engineering

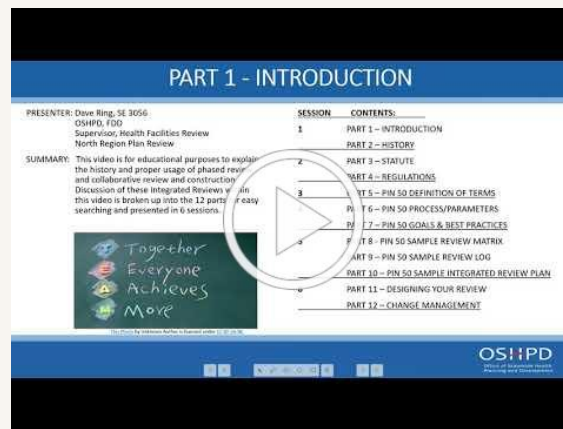
(January 4, 2021)



Collaborative Review and Construction (CRC) and Phased Plan Review (PPR) per PIN 50

This video is for educational purposes to explain the history and proper usage of [PIN 50](#) – Collaborative Review and Construction process (CRC) & Phased Plan Review (PPR). The PPR has been successfully used to reduce approval time and minimize the number of post approval documents. This video is presented in six sessions.

See link below for Session 2 (a new session will be presented weekly in chronological order).



2019 CBSC Intervening Code Cycle Updates

Changes Impacting Hospital Design and Construction and What to Expect

Over two sessions, the Office of Statewide Health Planning and Development (OSHPD) Technical Lead Disciplines will outline important changes in the intervening CBSC and explain what healthcare facilities, design professionals, and their construction teams should consider to achieve compliance.

[Session 1: January 12, 2021](#) (AIA 1.5 LU | HSW)

- Introduction
- California Administrative Code

- California Building Code

Click the links below to view session 1 video and handout of this webinar.

Session 1 Handout



To register, click on the session date.

[Session 2: February 9, 2021](#) (AIA 1.5 LU | HSW)

- California Electrical Code
- California Mechanical Code
- California Plumbing Code
- California Existing Building Code

10:00 – 11:30 a.m., Pacific Time

It is free to participate and registration is limited to **500** participants. Multiple staff members from one office should register INDIVIDUALLY to receive separate log-ins.

Please register early.



SAVE THE DATE!
February 24-26, 2021

Through 3 days of panel discussions and networking opportunities, the [2021 Healthcare Project Delivery Conference](#) will set out to answer complex issues surrounding the development and delivery of essential healthcare infrastructure in today's unprecedented economy.

Discover new project and partners. Connect with healthcare facility and system leaders, and learn how others are planning new developments and upgrades in

the post-COVID era.

If you're preparing your next procurement and want to hear how other healthcare facilities are moving projects forward during COVID, responding to current budget and planning challenges, and planning for 2021 you'll want to join.

Register now to secure the early registration price of \$299!

Over 100 leading practitioners will present their firsthand observations of a variety of projects of all sizes from around the country.

[Click to Register and Learn More](#)



Hospital Inspector Certification Examination Preparation

Join OSHPD's Inspection Services Unit (ISU) in a series of webinars that will provide guidance on how to read drawings for the plan reading portion of the Hospital Inspector Certification Exam.

OSHPD SPEAKERS

*Joseph LaBrie, S.E.
Regional Compliance Officer*
*Cesar Ponce
Compliance Officer*
*James Pan, S.E.
District Structural Engineer*
*Monica Colosi
Compliance Officer*

Fee: Complimentary

TIME

1:00 - 2:00 p.m., Pacific Time
Click on dates to register for each session

REGISTRATION

[February 23, 2021: Structural Plans - INSTRUCTION](#)

[February 25, 2021: Structural Plans - PRACTICE](#)

[March 9, 2021: Mech/Plumbing Plans - INSTRUCTION](#)

[March 11, 2021: Mech/Plumbing Plans - PRACTICE](#)

[March 16, 2021: Electrical Plans - INSTRUCTION](#)

[March 18, 2021: Electrical Plans - PRACTICE](#)

[March 23, 2021: Fire Life Safety Plans - INSTRUCTION](#)

[March 25, 2021: Fire Life Safety Plans - PRACTICE](#)



HOSPITAL INSPECTOR CERTIFICATION EXAMINATION NOTICE

Effective January 1, 2020, the new Hospital Inspector Certification Examinations are based on the 2019 California Building Standards Code and referenced standards.

Please refer to the [OSHDP website](#) for the overview of the Hospital Inspector Certification Program, minimum qualifications and the exam application form. New examinations for Hospital Inspector Class A, B and C are scheduled at a minimum of every six months.

Applications are now being accepted for the Spring 2021 (April/May) exams.

LOS ANGELES AREA

Exams for A, B and C Hospital Inspector Classifications

Dates: April 19-23, 2021 and May 17-21, 2021

Location: Office of Statewide Health Planning and Development

Wells Fargo South Tower

355 South Grand Avenue, 20th Floor

Los Angeles, CA 90071

FINAL FILING DATE – February 1, 2021

See [flyer](#) for more information.

Due to COVID-19, exams are being conducted electronically. All necessary reference code books, standards, plans, and test questions will be provided on a computer and two monitors for each examinee.

2019 CALIFORNIA BUILDING CODE

Part 2, Title 24, California Code of Regulations

[CAN 2-102.6](#) – Remodel – 11/08/2019

Action/Comment: N/A

[CAN 2-407.4.1](#) – Direct Corridor Access from Habitable Rooms – 11/12/2015

Action/Comment: 04/23/2020

[CAN 2-407.2.2](#) – Nurses' Stations – 04/21/09

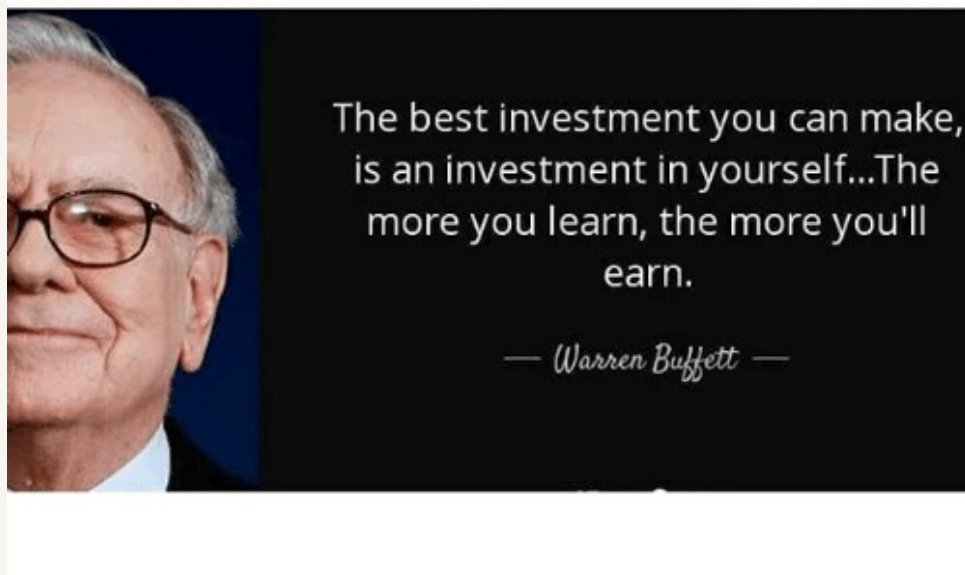
Action/Comment: 07/08/2020

[CAN 2-703.3](#) – Engineering Judgments – 05/20/09

Action/Comment: 07/09/2020

[CAN 2-2508.2.1](#) – Weather Protection for Gypsum Wallboard – 08/19/2009

Action/Comment: 04/16/2020



Strategic Building Services
928 N. San Fernando Blvd. J200
Burbank, CA 91504