

# STRATEGIC HEALTHCARE CONSTRUCTION REPORT

Volume 1 Issue 9

August 14, 2020



## QUALITY. INTEGRITY. INNOVATION.

*Our goal is to facilitate a streamlined process in the healthcare construction & inspection industry. We pursue and align these goals with our Clients, Designers, OSHPD and Contractors through experience, expertise and innovation.*

[Visit our website](#)

FOLLOW US



## Highlights



### Joyce Eisenberg Keefer Medical Center - Jewish Home Los Angeles

Skilled Nursing Facilities have been very vulnerable during the pandemic. We have taken many steps to work safely in and around the facilities and their patients while also working to effectively complete on-going OSHPD projects. SBS is pleased to announce Substantial Compliance of Joyce Eisenberg Keefer Medical Center's Psychiatric Unit Anti-Ligature Upgrade. Phase 1 consisted of a voluntary anti-ligature upgrade with TI improvements to 4 patient rooms, a

renovated nurse station, upgrade to staff restroom and exterior patio protective screening. We are now moving quickly into Phase 2. We'd like to recognize our project team Orgel CM, C/A Architects, PNG Construction who all took a substantial role with completing this phase with our OSHPD field staff team.

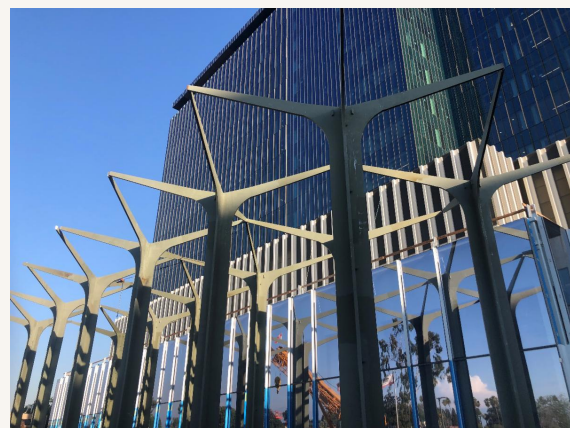


[Visit JHLA website](#)



## Loma Linda University Medical Center

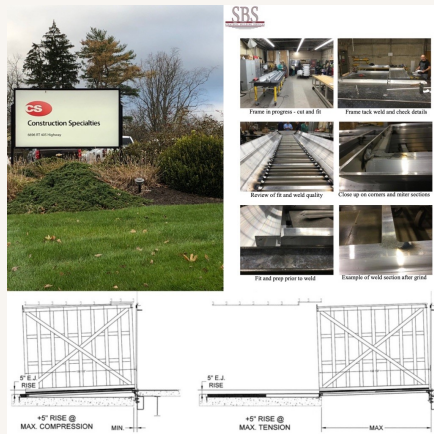
The Galleria and Main Entrance project is taking shape with the cruciform trellis at approximately 35% completion. With a very robust design, the drilled piers supporting the trellis structure are up to 50' deep with 42" wide by 36" deep grade beams tying the structures together.



The Galleria and the many ancillary structures such as the Schuman Bridge



connecting the New CTP to the new addition of the existing Schuman Pavilion. This includes MACC Units that will have a max compression/tension/lateral movement of +/- 63" and a maximum +5" rise with -1" drop. The MACC Units are nearing completion with shop fabrication and delivery to site. As part of our inspection process, SBS visited and qualified Construction Specialties shop located in Muncy, Pennsylvania. Review of Construction Specialties approved drawings, quality control process, material identification, storage and handling, WPS's, and welding stations to completion of final product was performed. Special Inspection requirements were established and coordinated with CS's shop, the SEOR and OSHPD. This aided in an efficient process between inspection and the build process which reduced special inspection costs.



### Sherman Oaks Hospital and Encino Hospital Medical Center

SBS joined Prime Healthcare alongside LPA and CNC in 2016, to provide IOR services for many of their construction projects. Last year, while the Pharmacy USP 797-800 Compounding projects at both Sherman Oaks Hospital and Encino Hospital Medical Center were procuring a phased approval with the California State of Pharmacy and Licensing, the Covid-19 pandemic further prolonged the projects and have been on hold. During that time, our project teams managed to maintain their communication and Sherman Oaks Hospital is scheduled to resume the Pharmacy project later this month.

To learn more about the Sterile Compounding Pharmacies in OSHPD 1 Buildings, please click on the link [OSHPD's A2 Advisory Guide](#)

Visit SOH Website

Visit EHMC website

## SBS Behind the Scenes

**Michael Samaniego**  
Project Manager

Mike joined SBS in the spring of 2019 as a Project Manager. During his time

with SBS, his key responsibilities have been project coordination, tracking and maintaining records, document control, and assisting in project closures.

In 2018, Mike obtained a Bachelor of Science in Electrical Engineering and is currently working towards obtaining an Inspector of Record license.

Mike is a team player who embraces all tasks assigned to him with an eager attitude and regards teamwork as an important part of business. Everyone at SBS enjoys working with him and appreciates his efforts!



## SBS LABS



**The healthcare construction industry can be very technical and it takes years of experience to accurately navigate through the process. We wanted to use this newsletter as not only reading about what SBS is up to, but also as a tool that can provide helpful information for you on your next OSHPD project. Here is this week's topic that we've experienced in the past and hopefully is beneficial to you:**

---

### Door Installations

Have you experienced complications with door installations?

There are many requirements with doors, their projections in the required width of corridors, listings, re-labeling, etc... The list is large so here is an item that can be helpful for you to watch out for on your next OSHPD project.

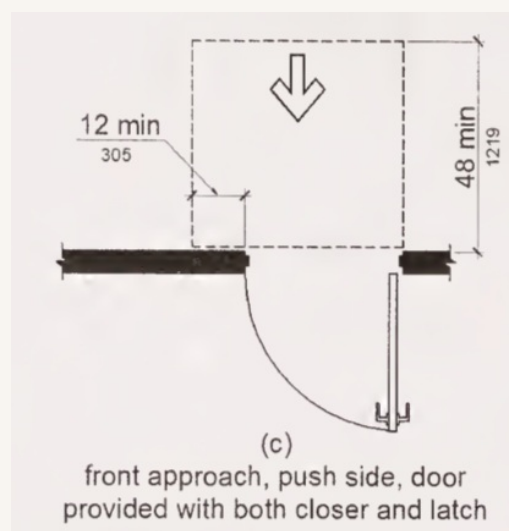
Doors opening into the required width of the corridor and where this can affect your project:

- *2019 CBC Part 2, V1 of 2 4073.1* **Corridor doors.** Patient sleeping rooms, treatment rooms, & offices located in areas specified in Sections 1224 & 1225 excluding offices in 1224.21 & 1225.8 do not require self-closing or auto-closing devices.
- *2019 CBC Part 2, V1 of 2 407.3.1.1* **Swing of corridor doors.** Corridor doors, other than those equipped with self-closing or automatic closing devices shall not swing into the required width of corridors

This appears to be an easy fix... just install a closer, right? When you install a



closer, CBC P2 V1, Table 11B-404.2.4.1 from the front approach push direction requires you to add a clear dimension of 12 inches if a closer and latch are provided. Where otherwise there is no minimum clear dimension required when you do not have a closer and latch. This can be very problematic if you do not meet that 12" clearance since a closer was not originally required or designed.



When installing a closer, it will need to allow for a full 180° swing to meet CBC P2 V1, Section 1005.7.1. Additionally, the installed door hardware cannot reduce the required width by more than 7".

These items are hard to detect in design and plan review. This is a common item that can be prevented with specific review during preconstruction.

---

As SBS LABS continues the journey of formalizing material to share with you, please take a moment to subscribe to our Youtube Channel to stay on top of all of the latest with [SBS LABS](#).

Contact SBS

Newsworthy



OSHPD

### Equipment Anchorage per PIN 68

#### **Fixed, Interim, Mobile, Movable, Other and Temporary Equipment**

OSHPD PIN 68 clarifies which type of equipment is required to be anchored, restrained, or permitted to be unanchored to meet the functional needs of hospitals.

This webinar focuses on what is needed to be shown on the construction documents to identify which equipment falls in each classification.

To register, click on the date below.

**[Tuesday, August 25, 2020](#)**

10:00 – 11:30 a.m., Pacific Time

It's free to participate.

For more details, [click here](#) for the flyer.

---

**Hospital Inspector Re-certification and Examination**

Due to the COVID-19 restrictions, the Inspection Services Unit (ISU) has changed the re-certification format for this year. ISU will be conducting the seminar portion in a 5-part webinar series and the exam will be administered by appointment only. You must register and participate in all five webinars in order to be considered entry into the exam. Each webinar session will be held on a Wednesday, from 10:30 a.m. – Noon.

Click on each date to register:

1. [July 22, 2020](#) – Architectural and Structural
2. [July 29, 2020](#) — Mechanical, Electrical, and Plumbing
3. [Aug 5, 2020](#) – Fire and Life Safety, 2019 TIO Form Changes
4. [Aug 12, 2020](#) – Administrative and Code of Ethics
5. [Aug 19, 2020](#) — IOR Duties and Responsibilities

**NOTE: CLASS C inspectors need only attend Sessions 4 and 5 to recertify.**

---

**Field Brief Advice and Open Mic with ISU**

The Inspection Services Unit (ISU) will be hosting a 10-minute series on “Field Brief Advice” followed by an Open Mic session on Wednesday afternoons at 1:00 p.m. Discussions will include various topics as experienced by FDD field staff.

Every Wednesday at 1:00 p.m., Pacific Time

- 7/29 DPOR and TIO – Speaker: Cesar Ponce  
8/5 Hospital Representative and Responsibilities – Speaker: Monica Colosi  
8/12 PIN68 – Speakers: James Pan and Chris Davis  
8/19 Radiology Vendors – Speaker: Joe LaBrie

**[Click here to register.](#)**

Speakers:

Joseph LaBrie, S.E.  
Regional Compliance Officer  
James Pan, S.E.  
District Structural Engineer  
Chris Davis, S.E.  
District Structural Engineer  
Cesar Ponce  
Compliance Officer  
Monica Colosi

Compliance Officer

It's free to participate and each Wednesday's session begins at 1:00 p.m., PST

These sessions are limited to 500 participants each and should be registered for separately. Please register early.

---



**PERSEVERANCE IS  
STUBBORNNESS  
WITH A PURPOSE**

—Josh Shipp

---

Strategic Building Services  
18345 Sierra Highway, Unit 6  
Santa Clarita, CA 91351