

STRATEGIC HEALTHCARE CONSTRUCTION REPORT

Volume 2 Issue 8

March 16, 2021



QUALITY. INTEGRITY. INNOVATION.

Our goal is to facilitate a streamlined process in the healthcare construction & inspection industry. We pursue and align these goals with our Clients, Designers, OSHPD and Contractors through experience, expertise and innovation.

[Visit our website](#)

FOLLOW US



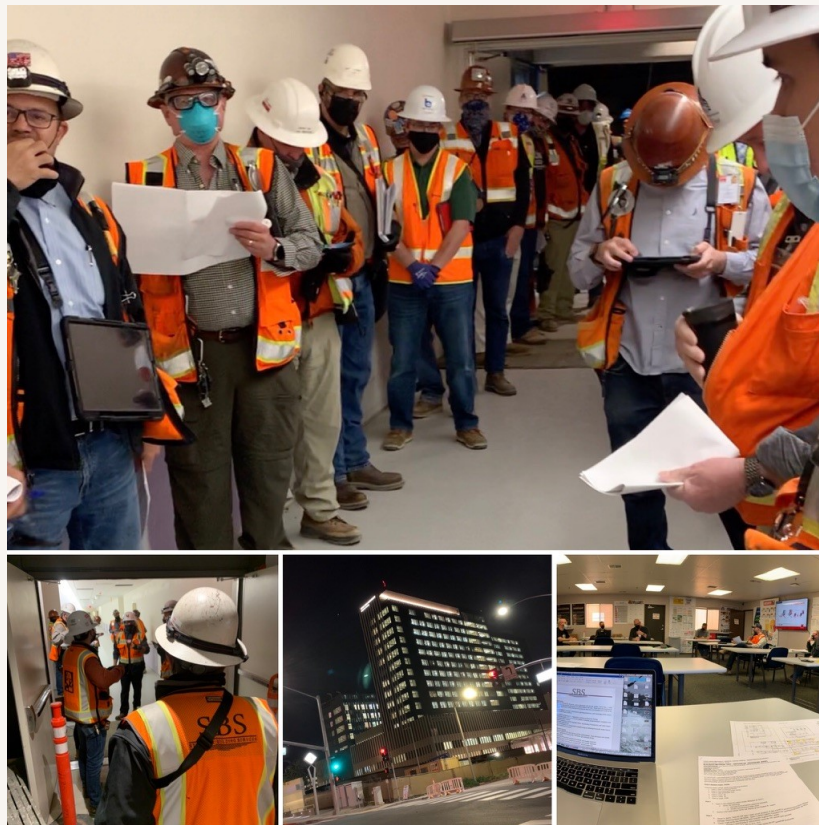
Highlights



Loma Linda University Medical Center Emergency Power Testing

Planning and coordination for Loma Linda's CTP emergency power testing. Part of commissioning the building, the essential electrical system has to perform as designed. This includes testing the generators per NFPA 110 Section 7.13., as well as, testing the building system to ensure items such as egress lighting, fire alarm, elevators, medical gas alarms, equipment, etc... is all functioning under

emergency power conditions.



IOR Spotlight



James Hamilton
IOR

James joined the SBS team at Loma Linda University Center in July of 2018. He is an important part of the team as he is responsible for the mechanical systems wet and dry.

He has two children and enjoys spending time with family and friends. Some of his hobbies include music, riding motorcycles and watching sports.

The SBS team appreciates James' efforts!

SBS LABS



The healthcare construction industry can be very technical and it takes years of experience to accurately navigate through the process. We wanted to use this newsletter as not only reading about what SBS is up to, but also as a tool that can provide helpful information for you on your next OSHPD project. Here is this

week's topic that we've experienced in the past and hopefully is beneficial to you:

CAT provides informative news articles that can be found at the following link:

https://www.cat.com/en_US/articles/cat-in-the-news/electric-power-news.html

Many articles are still applicable to the current standards adopted in Chapter 35 of the 2019 CBC Part 2, Volume 2 of 2.

Consulting Specifying Engineers Article

As SBS LABS continues the journey of formalizing material to share with you, please take a moment to subscribe to our Youtube Channel to stay on top of all of the latest with [SBS LABS](#).

Contact SBS

Newsworthy



Unique Healthcare Showroom Debuts in Charlotte

(February 24, 2021)



The intriguing new venue will showcase healthcare furniture and other products, and also serve as a host for industry collaboration and expert speakers. Photo Credit: Stance Healthcare



AMERICAN CONSTRUCTION INSPECTORS ASSOCIATION

Leadership and Beyond

ACIA presents:
Cal OES SAP Evaluator Training
with Jason Spotts

**Join us for a 3 day Virtual Cal OES SAP Evaluator Training with
Cal OES's very own Statewide SAP Coordinator, Jason Spotts.**

Monday - Wednesday
Apr 26 - 28, 4 pm - 6 pm each day
Virtual

[Register here](#)



April 21, 2021

5:30 pm - 7:30 pm

Topic

Modular Building in Healthcare for Future Flexibility

Speaker

Bill Summers, Anchor Medical Company

Non-Member Attendance Policy

Non-CSHE members are welcome to attend one complimentary chapter meeting. If you are a non-member who has already attended one chapter meeting, you will be unable to register for any additional chapter meetings until you have become a member. [Please click here for the online membership application.](#)

Continuing Education Credits

Participating CSHE members, whose names are clearly legible in the Zoom participant list, are eligible for a certificate for 1 contact hour.

Questions or Concerns?

For questions or concerns, please contact Beth Demeter directly at bethd@cshe.org.

[Register](#)



Commissioning Health Care Facilities – A 360-degree Process

March 17, 2021
12:00pm - 1pm CT

Speaker:

Tony Szwarc, MEP Coordinator, Target Building Construction

Learning Objectives:

- Identify the roles of the owner, CX agent and construction manager for a 360- degree CX process.
- Describe the breadth of systems that a 360-degree CX process encompasses.
- Explain the benefits of incorporating upkeep of facility standards within the 360- degree CX process.

Audience:

- Facility directors/managers/engineers
- Architects, design engineers and commissioning agents
- Contractors

Pricing:

\$25 for ASHE Members

\$40 for Nonmembers

[To Register and Learn More](#)



Join Dan DeSantis for a webinar:

Endothermic Wraps: Thermal Protective Systems

By the end of this webinar, you'll have a better understanding of the ever-evolving code requirements and modernization of building materials and how each has impacted the way we design and build in the 21st century. You will also

understand:

- New code requirements of NFPA 1221 as it pertains to fire rated shaft enclosure.
- The events that lead to major landmark code changes as it pertains to fire rated shaft enclosures.
- Acceptable methods of shaft containment for critical electrical services.
- Fire-rated shaft enclosure for in building fuel oil piping systems.

UL tested and listed products designed specifically for the shaft enclosure of critical in building services.

Click the video below to view the webinar that took place on March 3, 2021:

Endothermic Wraps: Thermal Protective System



OSH PD

UPCOMING WEBINAR

Accessibility CAN 2-11B

Date: TBD | Registration information coming soon!



OSH PD

Hospital Inspector Certification Examination Preparation

***Two sessions JUST ADDED for REGISTRATION
Architectural Plan Reading!**

[February 16, 2021: Architectural Plans -
Part 1 - Instruction *](#)

Join OSHPD's Inspection Services Unit (ISU) in a series of webinars that will provide guidance on how to read drawings for the plan reading portion of the Hospital Inspector Certification Exam.

OSHPD SPEAKERS

Joseph LaBrie, S.E.

Regional Compliance Officer

Cesar Ponce

Compliance Officer

James Pan, S.E.

District Structural Engineer

Monica Colosi

Compliance Officer

Fee: Complimentary

TIME

1:00 - 2:00 p.m., Pacific Time

Click on dates to register for each session

[February 18, 2021: Architectural Plans - Part 2 - Practice *](#)

[February 23, 2021: Structural Plans - INSTRUCTION](#)

[February 25, 2021: Structural Plans - PRACTICE](#)

[March 9, 2021: Mech/Plumbing Plans - INSTRUCTION](#)

[March 11, 2021: Mech/Plumbing Plans - PRACTICE](#)

[March 16, 2021: Electrical Plans - INSTRUCTION](#)

[March 18, 2021: Electrical Plans - PRACTICE](#)

[March 23, 2021: Fire Life Safety Plans - INSTRUCTION](#)

[March 25, 2021: Fire Life Safety Plans - PRACTICE](#)



2019 CALIFORNIA BUILDING CODE

Part 2, Title 24, California Code of Regulations

[CAN 2-102.6](#) – Remodel – 11/08/2019

Action/Comment: N/A

[CAN 2-407.4.1](#) – Direct Corridor Access from Habitable Rooms – 11/12/2015

Action/Comment: 04/23/2020

[CAN 2-407.2.2](#) – Nurses' Stations – 04/21/09

Action/Comment: 07/08/2020

[CAN 2-703.3](#) – Engineering Judgments – 05/20/09

Action/Comment: 07/09/2020

[CAN 2-2508.2.1](#) – Weather Protection for Gypsum Wallboard – 08/19/2009

Action/Comment: 04/16/2020

YOU GET
WHAT YOU
WORK FOR
NOT WHAT
YOU WISH
FOR.

Strategic Building Services
928 N. San Fernando Blvd. J200
Burbank, CA 91504