

# STRATEGIC HEALTHCARE CONSTRUCTION REPORT

Volume 2 Issue 10

March 30, 2021



## QUALITY. INTEGRITY. INNOVATION.

*Our goal is to facilitate a streamlined process in the healthcare construction & inspection industry. We pursue and align these goals with our Clients, Designers, OSHPD and Contractors through experience, expertise and innovation.*

[Visit our website](#)

FOLLOW US



## Highlights



Here's an update and behind the scenes fabrication in Indiana for the new AVH Emergency Department modular build. It is moving forward with the decking diaphragm, fire rated sleeves and mock fit up of modules. Site work preparation is gearing up with planning for MEP tie-ins. The foundation will also be starting soon

with plans to complete and cure just prior to shipment and placement of the fully built out modules.



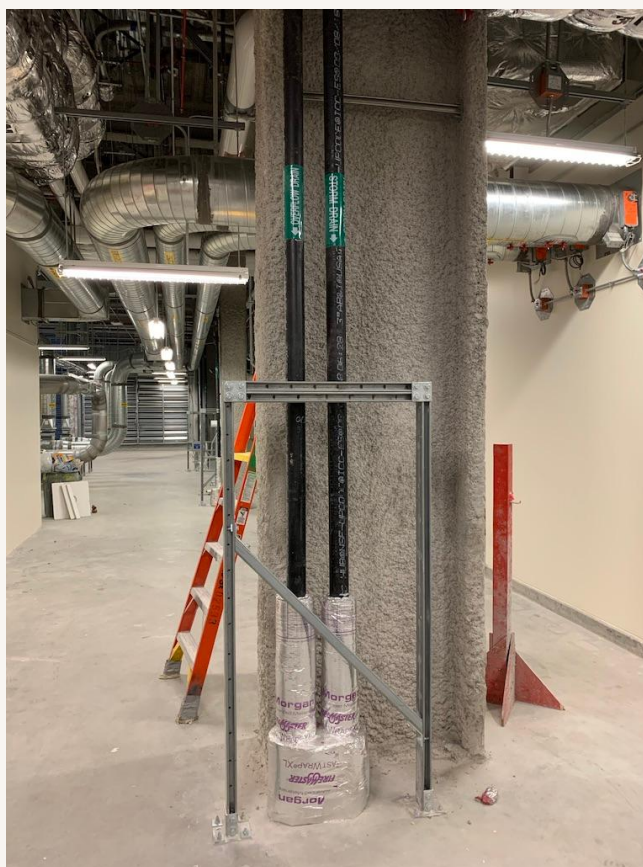
SBS will be providing Inspector of Record Services for Providence Holy Cross Medical Center's new mobile MRI trailer. The project scope includes the installation of the trailer adjacent to the Cancer Center in an existing paved area designated for mobile trailer units. Modifications to the surrounding area will require removal of existing asphalt paving, concrete curbs, and landscape areas. Additionally, renovations to the existing path of travel connecting the hospital to the trailer will require construction of new concrete walkways and ramps as well

as a new overhead roof structure.

## SBS LABS



The healthcare construction industry can be very technical and it takes years of experience to accurately navigate through the process. We wanted to use this newsletter as not only reading about what SBS is up to, but also as a tool that can provide helpful information for you on your next OSHPD project. Here is this week's topic that we've experienced in the past and hopefully is beneficial to you:



Since we highlighted the Hilti 680 Sleeve in our Indiana modular build, we wanted to share [Hilti's cotton waste test document](#) to discuss T-Ratings & L Ratings. Utilizing the cotton waste test can save you additional materials and labor to avoid installing a Fyre Wrap or Firemaster FastWrap product when your piping is out of the wall, as shown in the picture above. There are multiple systems noted in the Hitlit Cotton Waste Test but it is important to identify the type of 680 sleeve as they vary based on the penetrant material type classified as "P", "M", or "N", "PX", etc. The sleeves also provide the required L Rating that all floors require in Group I-2 facilities since floors are considered smoke barriers.

Even though this test is from 2006, the systems remain consistent but many have been improved or have additional requirements such as the L Rating. There are many new systems and products that can also be found online or by contacting your local Hilti or specific fire stop manufacture representative. Since the code has changed a lot since the 2001 code cycle, the current 2019 CBC code reference can be found in section 714 Penetrations.

Note: When looking for fire rated penetrations and joints, it is recommended to utilize UL's website at [www.ul.com](http://www.ul.com) where all information is provided. Sometimes Hilti systems or other manufactures will not have additional information that UL tested systems provide.

As SBS LABS continues the journey of formalizing material to share with you, please take a moment to subscribe to our Youtube Channel to stay on top of all of the latest with [SBS LABS](#).

[Contact SBS](#)

## Newsworthy



### McCarthy Begins Work on Major Arizona Expansion Project

(March 29, 2021)



The planned expansion includes adding a second five-story patient tower that will bring 109 new patient beds to the facility initially. Photo Credit: McCarthy Building Companies



## Insulating to Protect Chilled Water Systems, By Region

(March 17, 2021)



HPAC Engineering Article



### Fire Safety Challenges of 'Green' Buildings and Attributes Webinar

Wednesday, April 14, 12:30 p.m. ET

This webinar will present highlights from a comprehensive information review of how the landscape of fire safety challenges of 'green' attributes of buildings has developed since 2012. It is based on a global information search into: fire events involving 'green' and/or sustainable building materials, systems and features; emerging 'green' building materials, systems and features; and research, regulatory changes, engineering approaches, risk mitigation strategies, and firefighting tactics associated with fire challenges with 'green' and/or sustainable building materials, systems and features.

Webinar Presenters:

- Brian Meacham, PhD, PE, Meacham Associates
- Margaret McNamee, PhD, Lund University

[Register here](#)

**Addressing Fire Safety Challenges During Construction Webinar**

Thursday, April 15, 1:00 p.m. ET

There have been several large-scale fires at construction sites in recent years, causing multi-millions of dollars in damage, as well as potential personal injury and loss beyond the structure of origin.

Join NFPA as we discuss with a panel of industry experts some of the key considerations for construction site fire safety. Topics will include the fire risks present during construction, the importance of proper training, and the role of the Fire Prevention Program Manager. There will also be plenty of opportunity for Q&A with our panel members. This is a webinar that you do not want to miss!

[Register here](#)



**April 21, 2021**

5:30 pm - 7:30 pm

### **Topic**

Modular Building in Healthcare for Future Flexibility

### **Speaker**

Bill Summers, Anchor Medical Company

### **Non-Member Attendance Policy**

Non-CSHE members are welcome to attend one complimentary chapter meeting. If you are a non-member who has already attended one chapter meeting, you will be unable to register for any additional chapter meetings until you have become a member. [Please click here for the online membership application.](#)

### **Continuing Education Credits**

Participating CSHE members, whose names are clearly legible in the Zoom participant list, are eligible for a certificate for 1 contact hour.

### **Questions or Concerns?**

For questions or concerns, please contact Beth Demeter directly at [bethd@cshe.org](mailto:bethd@cshe.org).

[Register](#)



AMERICAN CONSTRUCTION INSPECTORS ASSOCIATION

Leadership and Beyond

**ACIA presents:**  
**Cal OES SAP Evaluator Training**  
**with Jason Spotts**

**Join us for a 3 day Virtual Cal OES SAP Evaluator Training with  
Cal OES's very own Statewide SAP Coordinator, Jason Spotts.**

Monday - Wednesday  
Apr 26 - 28, 4 pm - 6 pm each day  
Virtual

[Register here](#)



OSHDPD

**Engineering Judgments CAN 2-703.3**

**Tuesday, April 13, 2021**

**10:00 – 11:00 a.m., Pacific Time**

AIA 1 LU | HSW

Learn about the background, interpretation, documentation, and documentation submittal requirements of the recently updated Engineering Judgment Code Application Notice (CAN) 2-703.3.

- CBC 703.3
- Building Elements versus non-Building Elements
- Plan Review and Field Review
- Alternate Method of Compliance (AMC)

To register, [click here.](#)

For more information, [click here.](#)



OSHDPD

## **\*Two sessions JUST ADDED for Architectural Plan Reading!**

Join OSHPD's Inspection Services Unit (ISU) in a series of webinars that will provide guidance on how to read drawings for the plan reading portion of the Hospital Inspector Certification Exam.

### **OSHPD SPEAKERS**

*Joseph LaBrie, S.E.  
Regional Compliance Officer  
Cesar Ponce  
Compliance Officer  
James Pan, S.E.  
District Structural Engineer  
Monica Colosi  
Compliance Officer*

### **Fee: Complimentary**

#### **TIME**

1:00 - 2:00 p.m., Pacific Time

Click on dates to register for each session

### **REGISTRATION**

[February 16, 2021: Architectural Plans - Part 1 - Instruction \\*](#)

[February 18, 2021: Architectural Plans - Part 2 - Practice \\*](#)

[February 23, 2021: Structural Plans - INSTRUCTION](#)

[February 25, 2021: Structural Plans - PRACTICE](#)

[March 9, 2021: Mech/Plumbing Plans - INSTRUCTION](#)

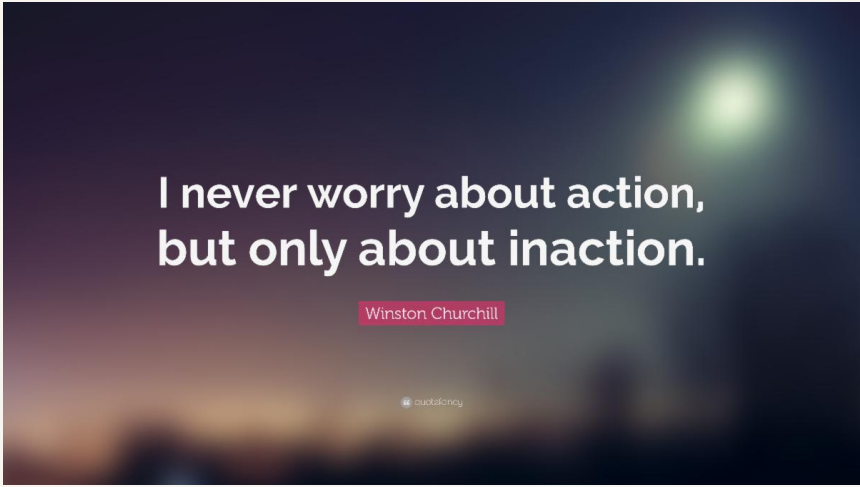
[March 11, 2021: Mech/Plumbing Plans - PRACTICE](#)

[March 16, 2021: Electrical Plans - INSTRUCTION](#)

[March 18, 2021: Electrical Plans - PRACTICE](#)

[March 23, 2021: Fire Life Safety Plans - INSTRUCTION](#)

[March 25, 2021: Fire Life Safety Plans - PRACTICE](#)



**I never worry about action,  
but only about inaction.**

Winston Churchill

@cuckooagency

Strategic Building Services  
928 N. San Fernando Blvd. J200  
Burbank, CA 91504