

STRATEGIC HEALTHCARE CONSTRUCTION REPORT

Volume 2 Issue 12

July 2, 2021



QUALITY. INTEGRITY. INNOVATION.

Visit our Website



Highlights



SBS has been awarded the Interventional Radiology Equipmen project. SBS joins 19six Architects and HDC on this project to replace the existing interventional radiology equipment.



Photo credit: Providence.org

Newsworthy



Joint Venture to Build, Operate 58,600-SF
Inpatient Rehabilitation Facility in Sacramento



MCD Article

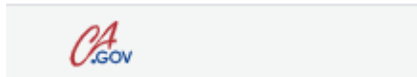


2021 ASHE Annual Conference - In person event

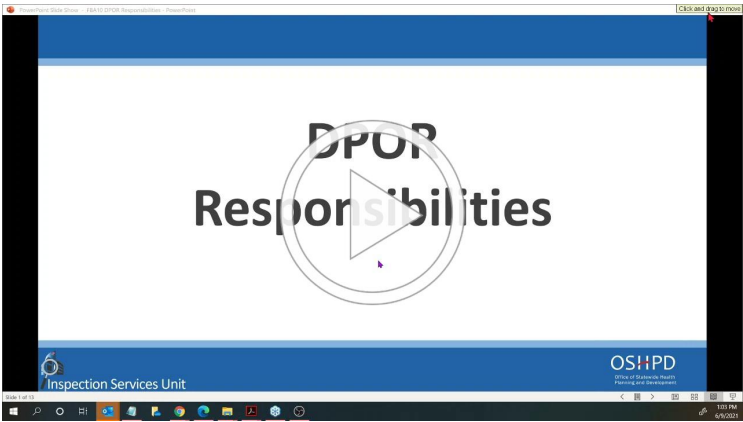
Sun, Aug 08, 2021 – Wed, Aug 11, 2021

Health care facility and engineering professionals will gather at the 2021 ASHE Annual Conference to network, find new solutions, and learn alongside one another. The ASHE Annual Conference creates the ideal environment to connect with fellow colleagues while preparing yourself for future trends and challenges in health care. Attendees can earn contact hours and gain valuable tools and resources to better navigate the ever changing health care landscape. Plan to join us August 8-11, 2021 in Nashville, as we prepare for the future of health care, and take the time to review and develop your career game plan

[Click to Register and Learn More](#)



DPOR Responsibilities



SBS LABS



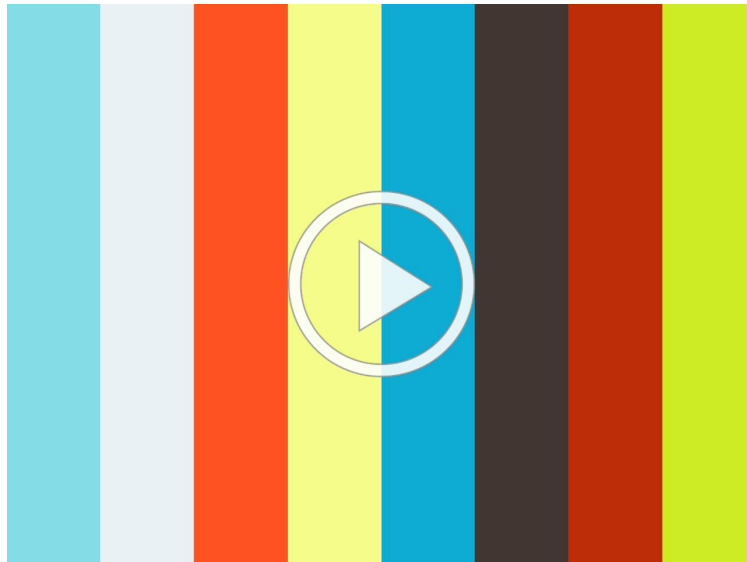


FIELDWIRE

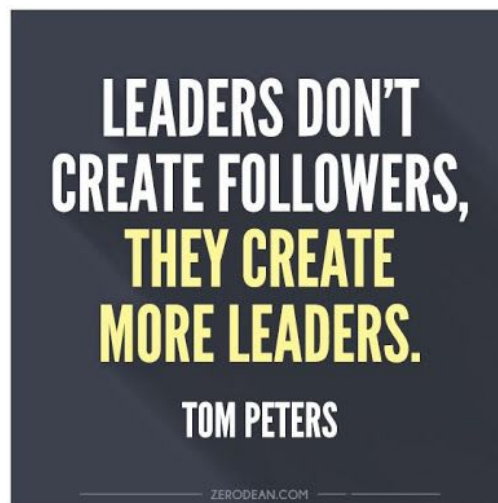
Click on the video link below to view this webinar!

Managing inspections for hospital construction projects is a complex process that demands a simple solution.

Hosted by Ben Hadick, Construction Solutions Manager at Fieldwire, and Tom Huberty, Lead Inspector of Record for Loma Linda's New Campus Transformation Project with Strategic Building Services



To subscribe to our Youtube Channel and stay on top of all of the latest click [here](#).



Strategic Building Services | 928 North San Fernando Blvd. J-200, Burbank, CA 91504

Strategic Building Services | 928 North San Fernando Blvd., J200, Burbank, CA 91504

[Unsubscribe tbashlor@sbs-bldg.com](mailto:tbashlor@sbs-bldg.com)

[Update Profile](#) | [About Constant Contact](#)

Sent bystrategicbuildingservices@sbs-bldg.comin collaboration
with



Try email marketing for free today!