

STRATEGIC HEALTHCARE CONSTRUCTION REPORT

Volume 2 Issue 14

August 20, 2021



QUALITY. INTEGRITY. INNOVATION.

Visit our Website



Highlights



On August 8th, Loma Linda University Medical Center and Children's Hospital staff along with volunteers completed the transfer of 301 patients to the Dennis and Carol Troesh Campus. This has been a special project for SBS to be a part of and we are very happy to see it in full operation. Congratulations to the entire hospital team and all those who played a part in building this state of the art facility.



WIRELESS ACCESS POINTS PROJECT

Providence Health & Services has awarded SBS the Inspector of Record services for their extensive Wireless Access Point upgrade. This encompasses almost all Providence facilities including Providence Holy Cross Medical Center, Providence Little Company of Mary Medical Center, Providence St. Joseph Hospital and Providence St. Mary's Apple Valley, just to name a few.

SBS BEHIND THE SCENES

Since this hospital project in 2013 pictured here, SBS has completed multiple Tower additions, Replacement Hospitals, large TI Buildouts and over 150 Hospital and Skilled Nursing Facility remodel projects throughout Southern California. Having a great team of inspectors who are proven leaders that can manage these technical hospital projects is what makes us successful from hospital



tower to hospital tower. We look forward to having John on another upcoming New Hospital Tower addition in Bakersfield starting next month that SBS has just been awarded.

**IOR John Perry, DSE Jason Lee, IOR Tyler Bashlor
2013**

Please join us in congratulating Veronica Grimaldi on her promotion to Operations Manager. Veronica joined SBS in 2016, working with various hospital facilities providing administrative and document control support. Veronica's background, education and determination have led to her taking on more tasks and responsibilities. Transitioning Veronica into the role of Operations Manager will allow her to become fully immersed in the day-to-day operations where her skills will make the most impact. We are looking forward to working with her in this new capacity. Congratulations Veronica!



Newsworthy



Healthcare Highlight - August

Highlighted use cases for E-Wrap in Healthcare

E-wrap is the lightest weight, most flexible shaft enclosure wrap on the market today. Healthcare facilities turn to STI to provide conformance solutions on the buildings most critical services. From fuel oil piping to critical care circuitry, E-Wrap is 3rd party tested and listed by UL and Intertek for the fire rated shaft enclosure of many common healthcare services.



[Click here for more information](#)



Major Risk Mitigation Strategies Deliver Hospital Concourse with Minimal Disruption

(June 2, 2021)



The project team sets the first lattice girder at the entrance of the tunnel. Photo courtesy of Brad Pugh

DPR Construction Article



REGISTRATION IS OPEN



REGISTER

Registration is Open

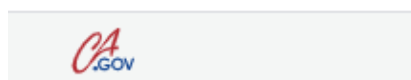
ACI is pleased to be hosting its ACI Concrete Convention in-person, in Atlanta, GA, USA, on October 17-21, 2021. The convention will have a robust schedule that includes traditional in-person activities as well as select programming

available live or on-demand to attendees who choose to attend virtually. Make sure to register for the ACI Concrete Convention before the price increases! [Register today](#) and save \$100 off your convention experience. Registration rates will increase after September 12, 2021.

Convention Preview

The [Convention Preview](#) for the ACI Concrete Convention is now available. The preview will give you a glimpse of some of the events you won't want to miss. It will also provide you with useful information such as where to go to register for the Convention, how to become a sponsor, and much more! Download your copy today and get a sneak peek at what you can expect during the upcoming ACI Convention in Atlanta, GA, USA.

[REGISTER SCHEDULE](#)



OSHPD 3 Primary Care Clinics: The What, When, and How

Two Part Web-Series presented in partnership with the California Primary Care Association (CPCA)

Learn about what OSHPD 3 is, surveying your potential property, the plan review process and receiving your OSHPD 3 sign-off.

Please [see flyer](#) for more information.

To register, click on the individual dates below.*

Part 1: Presentation and Overview

Presented by OSHPD and CPCA

[Tuesday, August 24, 2021](#)

10:00 AM – 12:00 PM (Pacific Time)

Fee: Complimentary

- What is OSHPD 3
- Clinic Plan Review Options
- Evaluating Facilities
- Resources Available
- Documentation Submittal and Plan Review
- Plan of Modernization
- Getting the CDPH Form 270 Signed

Part 2: Workshop

Presented by CPCA and OSHPD

[Tuesday, August 31, 2021](#) (Registration through CPCA)

10:00 AM – 11:00 AM (Pacific Time)

Fee:

CPCA Member: \$100

Non-Member Health Center: \$100

CPCA Associates: \$112.50

Non-CPCA, Non-Health Center: \$125

- Engage with OSHPD Staff and a Consultant who has years of experience working with Primary Care Clinics in California.
- Ask follow-up questions from Part 1 of the training and get expert advice on OSHPD 3 Building Standards.

*You must register for both parts individually to receive separate log-ins.

SBS LABS

To subscribe to our Youtube Channel and stay on top of all of the latest click [here](#).

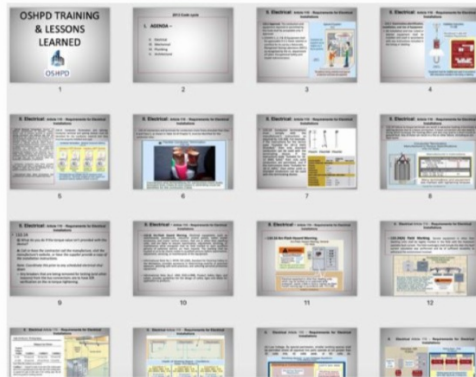
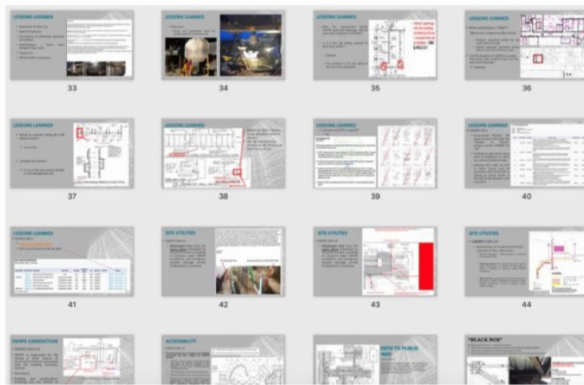


Lessons Learned

This week, we wanted to highlight the importance of sharing lessons learned. SBS attended a lessons learned for Loma Linda University Medical Center's New Campus Transformation Project this past July. McCarthy Builders hosted the event with our OSHPD RCO and Field Staff, Designers, SBS, JtechHCM and additional McCarthy team members from across the state. The meeting agenda was focused on closeout and commissioning where we revisited issues that arose, different code allowances, new code requirements that can affect your next project and methods on improving the overall process.



This can be for small or large projects and is really beneficial for each attendee. If you're interested in learning more about OSHPD processes and procedures, lessons learned, best practices, etc. contact us and we will be happy to provide you with a presentation for your team.



Always deliver more
than expected.

Larry Page



Strategic Building Services | 928 North San Fernando Blvd. J-200, Burbank, CA 91504

Strategic Building Services | 928 North San Fernando Blvd., J200, Burbank, CA 91504

Unsubscribe.tbashlor@sbs-bldg.com

[Update Profile](#) | [About Constant Contact](#)

Sent by strategicbuildingservices@sbs-bldg.com in collaboration
with



Try email marketing for free today!