

# STRATEGIC HEALTHCARE CONSTRUCTION REPORT

Volume 3 Issue 3  
January 31, 2022



QUALITY. INTEGRITY. INNOVATION.

Visit our Website



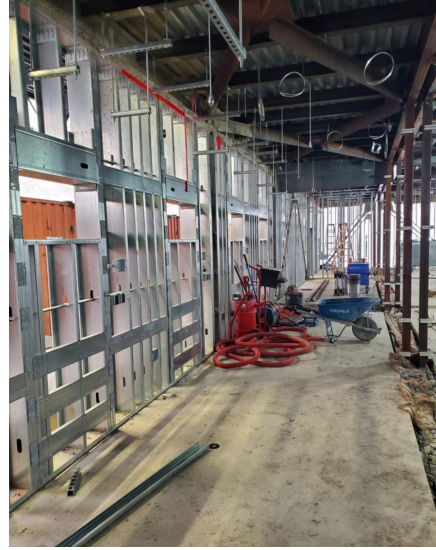
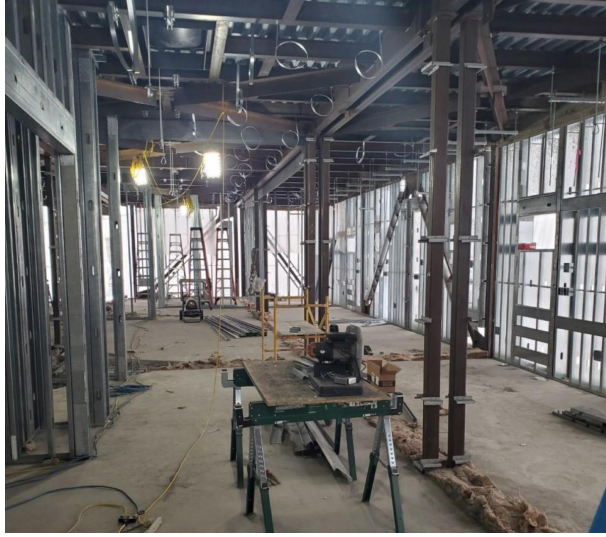
---

***SBS Inspector of Record***

## Highlights



Update and behind the scenes fabrication in Indiana for the AVH Emergency Department modular build for which SBS has been providing IOR services. Construction is in progress and shipment to Antelope Valley, California is set for May 2022.



The Vibra Acute Rehab Hospital Rio Bravo project continues to make progress. This 2-Story, 50 bed acute rehabilitation hospital has just been granted Certificate of Occupancy. Congratulations to the entire team on this great milestone!



## SBS BEHIND THE SCENES

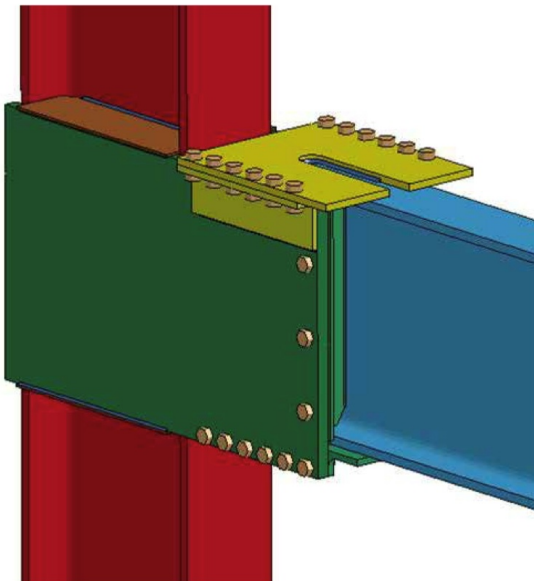
Interesting Engineering:

Throwback to Taylor Devices fabrication/testing to installation at Loma Linda University Medical Center Campus Transformation Project. If you would like to receive Taylor Devices quarterly newsletters or listen to their Damp It Out podcast, you can sign up on their website [here](#)



## SBS LABS

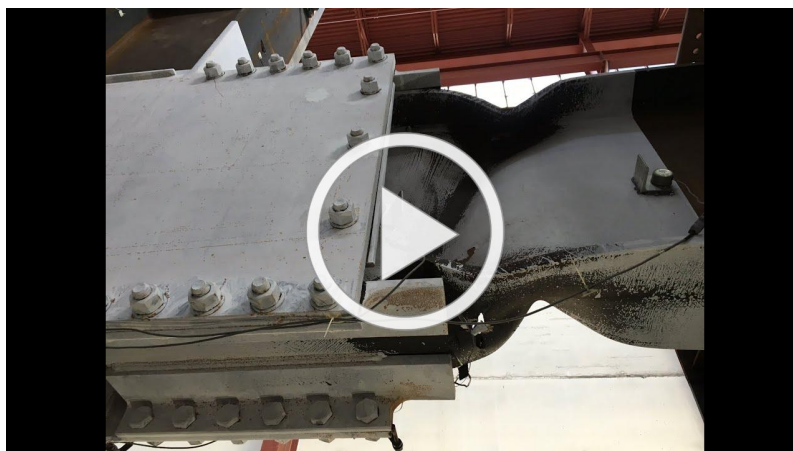
To subscribe to our Youtube Channel and stay on top of all of the latest click [here](#).



This week we wanted to highlight Bolted Sideplate design by MiTek. In the below video found on <https://www.sideplate.com/r-d/> it will illustrate:

### SIDEPLATE PLUS CONNECTION DESIGN SMF TEST U3 CLOSE UP

W36x150 beam and W36x231 column. 1 cycle at 7% rotation achieved with SidePlate PLUS Connection Design Technology (SMF) vs. only 4% required. Tested at UC-San Diego on 11/12/15.



This design is gaining traction in the healthcare industry after more than 600 hours of design review time with MiTek and HCAI Building Jurisdiction to obtain the AMC (Alternate Method of Compliance) approval for Healthcare steel structures. This bolted SMF system has now been implemented on its first hospital project and results with positive results for shop fabrication and field efficiency. Additional hospitals going into construction have received design approval from HCAI with this same bolted system that has also proven to save

time and money in installation and inspection.

Below we've also included "What Makes a Special Moment Frame Special?" by Behzad Rafezy, Director of Research & Development at Sideplate Systems, Inc. Please click [here](#) to read this article.

**If you like to attend the Steel Conference, please see below details to register:**

<https://www.nascc.aisc.org>

NASCC: The Steel Conference is back live  
and in-person in Denver on March 23–25, 2022

Registration for NASCC: The Steel Conference 2022 is open!

### **REGISTER FOR NASCC**

NASCC: The Steel Conference is the premier educational and networking event for the structural steel industry, bringing together structural engineers, structural steel fabricators, erectors, detailers, and architects. In addition to 200+ practical seminars on the latest design concepts, construction techniques, and cutting-edge research, the conference also features 235+ exhibitors showcasing products ranging from structural design software to machinery for cutting steel beams, and plentiful networking opportunities. One low registration fee gains you access to all of the technical sessions, the keynote addresses, the T.R. Higgins Lecture, and the exhibitor showcase.



---

## **Newsworthy**



**Do you have an interest in construction and inspection? The health care construction industry is looking for more certified Hospital Inspectors. It is a great opportunity for a rewarding**

career.

## Registration is opened to become a certified Hospital Inspector.

**Don't wait! The deadline is fast approaching!**

Submit your registration for  
Hospital Inspector Certification Examination (HICE)  
Last day to apply is February 1, 2022

For more information and qualification requirements, please click on the link below:

[CLICK HERE](#)

Register here

### SYSTEM AIR LEAKAGE TEST STANDARD



SHEET METAL AND AIR CONDITIONING CONTRACTORS'  
NATIONAL ASSOCIATION, INC.  
www.smacna.org

SMACNA has included a procedure for leakage testing of ductwork since January of 1965. This process has evolved after more research and feedback from the industry led to changes in both the pass/fail criteria and the application of testing. The next major leap forward is this standard. It goes beyond the duct and includes procedures for any item included in a forced air system.

This standard addresses leakage testing of any portion of, and up to, the entire forced air system. It does so in a responsible manner where the pass/fail criterions are based on sound research specific to testing conditions and distributes the responsibility of system performance equitably. The testing process is reliable, practical and based on decades of experience.

Click here to order

**HC+O NEWS**  
healthcare construction+operations





The hospital will offer inpatient rehabilitation care for people with debilitating illnesses and injuries such as stroke and brain injury, as well as other complex neurological and orthopedic conditions. Photo Credit: Courtesy of Callaway Architecture

## New Rehabilitation Hospital Breaks Ground in Arizona

[HC + O Article](#)



The Earthquake Expo USA is the leading seismic prep, management, and recovery event, showcasing the latest tools, strategies, and insights among investment and global industry leaders.

[Register here](#)



**The 2022 International Summit & Exhibition on  
Health Facility Planning, Design & Construction  
March 20 - 23**

# New Orleans, LA

[Register here](#)



**The Symposium heads to Long Beach, California  
September 27-29, 2022!**



[Click here for more details](#)



Strategic Building Services | 928 North San Fernando Blvd. J-200, Burbank, CA 91504

Strategic Building Services | 928 North San Fernando Blvd., J200, Burbank, CA 91504

[Unsubscribe tbashlor@sbs-bldg.com](mailto:tbashlor@sbs-bldg.com)

[Update Profile](#) | [About Constant Contact](#)

Sent by [strategicbuildingservices@sbs-bldg.com](mailto:strategicbuildingservices@sbs-bldg.com) in collaboration  
with

